

Historic, Archive Document

Do not assume content reflects current scientific knowledge, policies, or practices.



Catalog

of ROSES, TREES,
SHRUBS, FRUITS,
VINES & PLANTS

Call's Nurseries

PERRY, OHIO

GOLDEN DAWN

59¢ Ea. • 3 for \$1.59 See pages 2 and 3
for other varieties

Established 1877

Plant **FLOWERING TREES** *for Spots of Color*



Floribunda Crab
(Malus)

\$1.25 Ea. • \$2.25^A pair

SEE
P
A
G
E
8
for
More
Trees

Let's Get Acquainted

CALL'S NURSERIES

*Offer You Over
A Half Century of
Practical Experience*



The picture you see here is that of our founder, S. W. Call. From a humble beginning of one and one-half acres of fruit trees, Mr. Call started a business that has grown to 220 acres of **Fruit Trees, Ornamental Trees, Evergreens, Roses, etc.**

CALL'S NURSERIES have been in continuous operation since its founding. During the 65 years this nursery has acquired a "character" which surely marks its business relations with its customers.

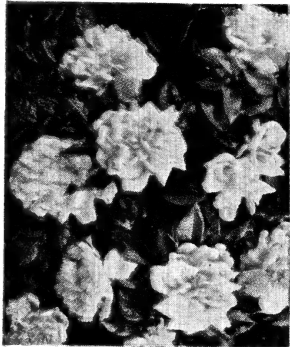
We feel safe in trusting to an introduction by old customers, but expect that new customers will have to be "shown." This very thing we are willing and eager to do. Should you desire any information not covered by our catalogue, please

feel free to write us. We shall be pleased to give you advice or help you select varieties of Fruit or Trees and Shrubs for beautifying your home grounds.

We are interested in every tree we sell, for upon their success depends our success. Our oldest customers are our warmest friends.

It is our aim to give individual service on each order we receive. We have expert field men who know how to select trees and plants that will please you.

We have worked long and hard for a good reputation among our customers and friends. We have kept faith with them for 65 years.



Gardenia

CLIMBING ROSES

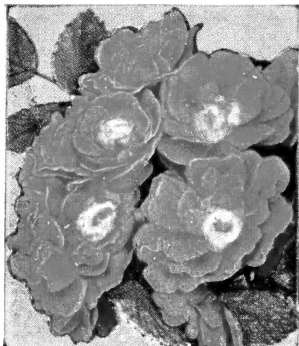
45¢ EACH
3 for \$1.19

**FOR ABUNDANT BLOOM
and
RAPID GROWTH**

- American Beauty**.....Rose pink
- Dr. Van Fleet**.....Flesh pink
- Gardenia**.....Bright yellow
- Paul's Scarlet**.....Vivid red



Dr. Van Fleet



Golden Salmon

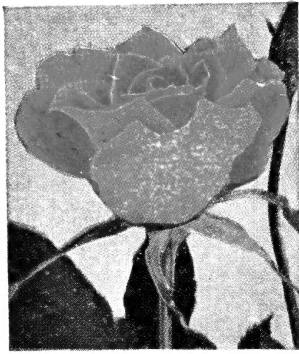
Polyantha Roses

- Golden Salmon**.....Bright orange
- Joseph Guy**.....Cherry-crimson
- Lafayette Improved**.....Glowing red

59¢ Each • 2 for 98¢



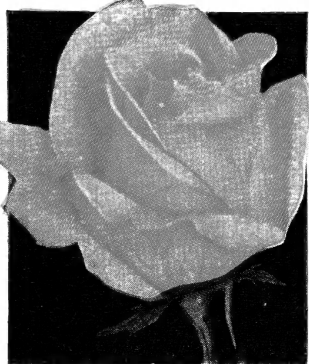
Joseph Guy



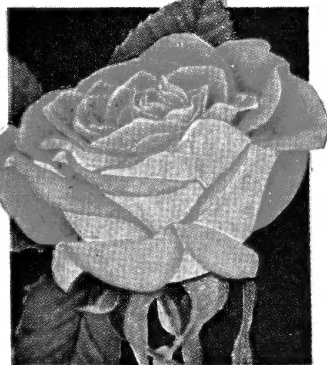
Talisman



McGredy's Scarlet



Autumn

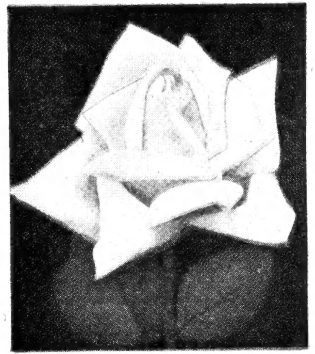


Condesa de Sastago

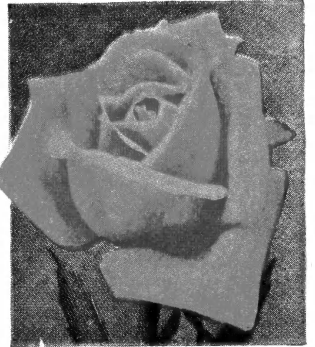
59¢ EACH
3 for \$1.59

Ami Quinard..... Dark maroon
Briarcliff..... Clear pink
Duquesa De Penaranda.... Apricot
Edith Nellie Perkins.... Salmon pink
Etoile de Hollande.. Velvety crimson
Frau Karl Druschki..... Pure white
Golden Ophelia..... Beautiful yellow
Grenoble..... Scarlet red
Margaret McGredy.... Brilliant red
Padre..... Salmon, gold
President H. Hoover.... Multi-color
Roslyn..... Yellow
Sister Therese..... Fine yellow

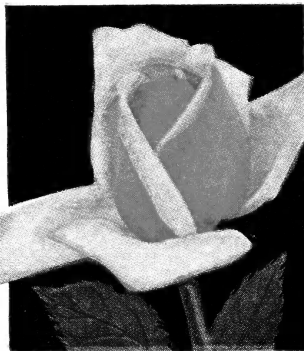
SPECIAL OFFER
One of each of the ten
pictured, or your choice of
10 varieties
Postpaid, for **\$4.79**



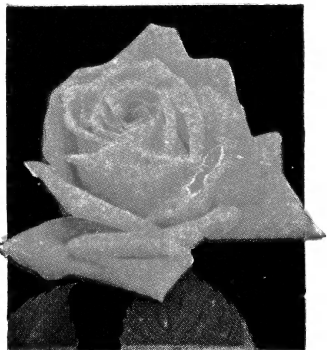
K. A. Viktoria



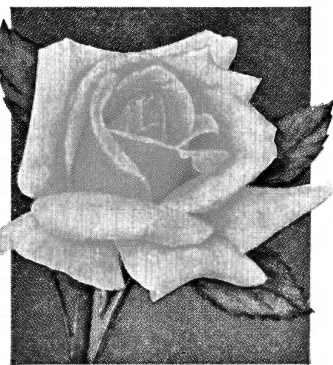
Red Radiance



Editor McFarland



Sunburst



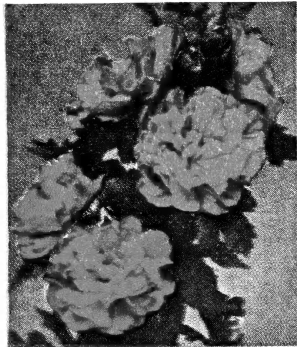
Joanna Hill



Pink Radiance

2-Year Large Size. Hardy Field-grown Bushes
WILL BLOOM PROFUSELY THIS YEAR

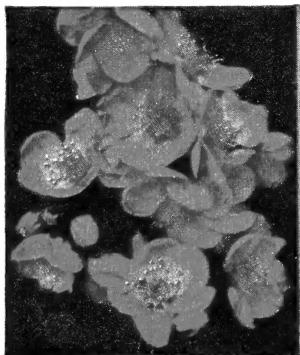
Call's HARDY FLOWERING Shrubs



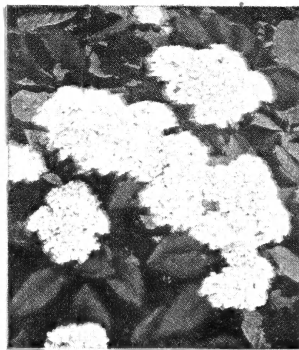
Althea (Rose of Sharon)



Forsythia



Red Flowering Quince



Hydrangea (Hills of Snow)

35^c Each 3 for \$1⁰⁰
All Shrubs On This Page

ALTHEA. Red, White, Purple. Large flowers, in August.

CORNUS sibirica. White flowers in clusters, blood red branches.

CORNUS elegantissima. Foliage of silver and green, red branches.

CORAL BERRY. Upright, branches loaded with large, coral-red berries, pink flowers.

DEUTZIA gracilis (Dwarf). Early white flowering, with drooping branches.

DEUTZIA, Pride of Rochester. Large, double, white flowers in June. Upright, compact.

GOLDEN BELL (Forsythia). Graceful shrub, green leaves, bright yellow flowers; early in Spring.

HONEYSUCKLE, Pink. Upright shrub, with spreading branches. Beautiful pink flowers in May and June.

HONEYSUCKLE, White. Same as above, except for white flowers.

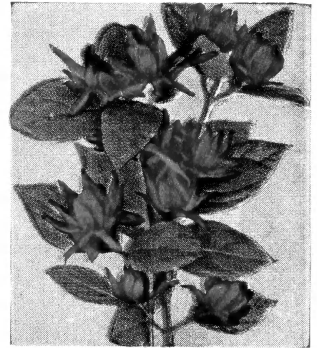
HYDRANGEA, Hills of Snow. Large, pure white flowers. Medium height, very showy.

HYDRANGEA, P. G. Immense white flowers turning to pink in Fall.

LILAC, Purple. Much desired shrub with abundant fragrance, dark purple flowers.

LILAC, White. Same as above, except for color.

MOCKORANGE (Philadelphus). Double pure white flowers; very fragrant.



Calycanthus

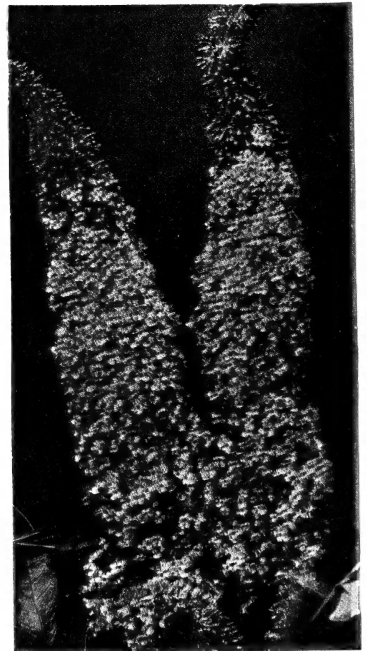
CALYCANTHUS

(Sweet Strawberry Bush)

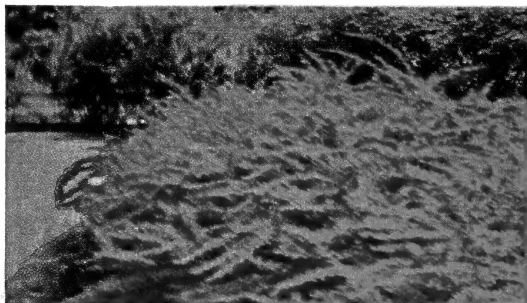
A handsome shrub forming a well-shaped specimen. Chocolate colored flowers, green leaves.

BUTTERFLY BUSH

- Dubonnet.....Purple-red
- Hartwegi.....Purple
- Ile de France.....Dark purple



Buddleia (Butterfly Bush)
Ile de France



DAZZLING
Red-Leaf BARBERRY

A beautiful NEW hardy shrub of unexcelled beauty. Foliage of rich bronze red, turning to scarlet red during the Summer. Bright red berries throughout the Winter.

15 to 18 inches

35c. each :: 3 for \$1.00



RED FLOWERING QUINCE. Earliest blooming shrub in Spring, covered with dazzling scarlet flowers and Quince-shaped fruits.

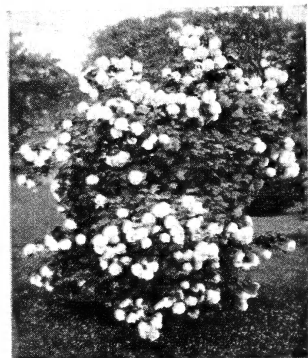
SNOWBALL BUSH. Medium size, globe-shaped flowers of pure white.

SNOWBERRY. Delicate pink flowers, followed by clusters of milk white berries. Ideal for shady spots.

SPIRAEA, Anthony Waterer (Dwarf). Brilliant rosy red flowers. Excellent for border or foundation planting.

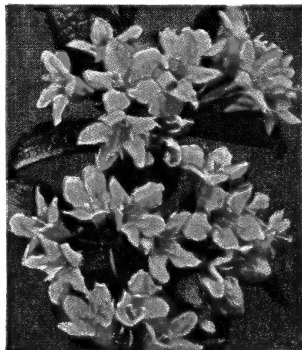
SPIRAEA vanhouttei (Bridalwreath). Graceful growing shrub, thickly studded with pure white flowers in May and June. Excellent for hedge or group planting.

TAMARIX. Graceful, lacelike foliage. Bright pink flowers in April and May. Very showy.



Snowball

Spiraea Vanhouttei



Weigela

WEIGELA, Pink. One of the most distinctive and attractive shrubs. Bright pink flowers.

WEIGELA, Red. Same as above, except for bright scarlet red flowers.

BEAUTY BERRY
(Callicarpa)

Pink-tinted flowers in August, followed by violet-purple berries. One of the new introductions. Very showy.



Spiraea, Anthony Waterer

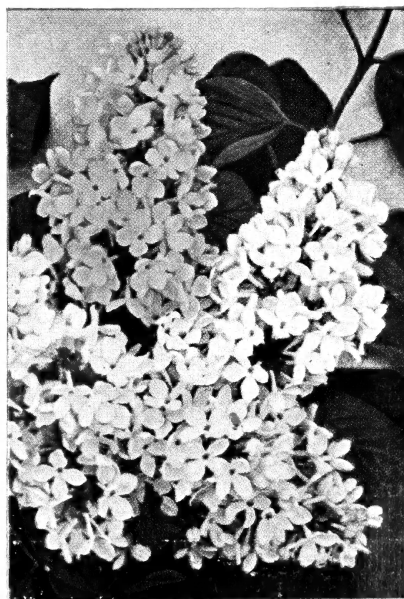
35¢ each
3 for \$1.00
ALL SHRUBS ON THIS PAGE EXCEPT FRENCH LILACS

FRENCH LILACS

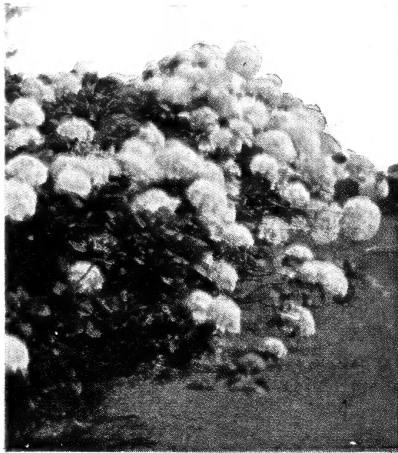
- Belle De Nancy**.....Double pink
- Chas. Jolly**.....Double purple
- Ludwig Spaeth**.....Single deep red
- Mme. Lemoine**.....Double white
- President Grey**.....Single rose

1 to 1½ ft., 45c. each :: 4 for \$1.69

1½ to 2 ft., 55c. each :: 4 for \$1.98



Hybrid French Lilacs



Hydrangea Nikko Blue

Sensational! REAL BLUE! HYDRANGEA NIKKO

Immense blooms of most charming **Blue** throughout the Summer. The most preferred of all **HYDRANGEAS**, due to its unusual form and color.

Specimen 2-year-old plants for only

60¢ Each
2 for \$1.10

ARONIA (Fireberry)

A **new**, improved form of shrub, producing snow-white flowers in early Spring. In the Fall entire plant is covered with bright red foliage and attractive red berries. Especially attractive to birds.

1½- to 2 ft. plants

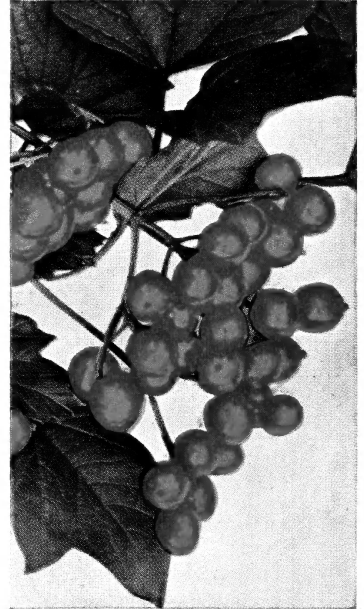
35c. ea. : 3 for \$1.00

HYDRANGEA, P.G. TREE FORM

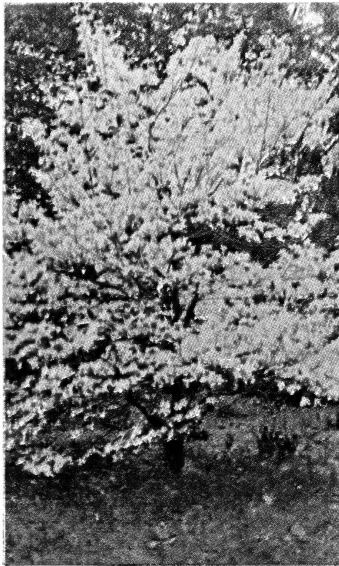
This lovely shrub is most attractive when grown in **Tree Form**. Huge pink and white flowers in the Fall when other shrubs and trees are without bloom.

2 to 3 ft.

75c. ea. : 2 for \$1.35



Aronia (Fire Berry)



Red Bud

RED BUD (Judas Tree)

Great masses of rosy orchid, budlike blooms on brown branches in early Spring, with ornamental leaves. One of the earliest to bloom.

2 ft. plants

45¢ Each : 3 for \$1.15

Hardy VINES and CREEPERS

BOSTON IVY. One of the finest hardy climbers. Clings to any surface. Deep green foliage.

BITTERSWEET. Glossy-green foliage and large clusters of orange-crimson berries, which remain all Winter.

CLEMATIS paniculata. Dense sheets of pure white flowers, in late Summer. Very fragrant.

HALL'S HONEYSUCKLE. Vigorous growth, with pure white flowers, changing to yellow. Extremely fragrant. Blooms all Summer.

SILVER LACE VINE. Rapid growing. Flowers of misty white, shot with tints of cream and pale rose. Profuse bloomer.

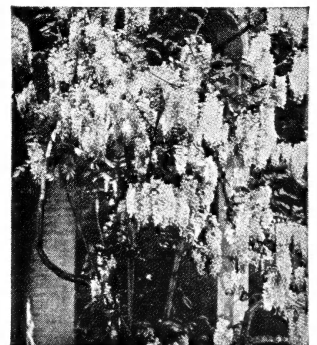
CLEMATIS jackmani. Immense flowers of violet-purple. Blooms throughout the Summer.

35c.

Each

3 for \$1.00

65c. Each



Wisteria

WISTERIA

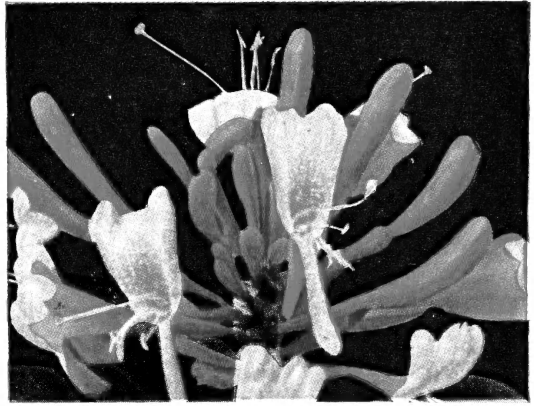
A very desirable vine with large, Grapelike, drooping clusters of purple flowers.

45¢ Each : 3 for \$1.15

New! RED HONEYSUCKLE GOLDFLAME

An exceptionally fine, **New** flowering vine, shaded maroon-red on the outside, the inside light to deep golden yellow. Plant is very hardy.

45¢ Each : 3 for \$1.15



New Goldflame Honeysuckle

DUTCHMAN'S PIPE

A vigorous, rapid growing vine. Very hardy. Light green leaves and curious miniature pipe-shaped flowers.

65¢
ea.



California Privet

NEW BARBERRY ERECTA

Similar to Barberry thunbergi but more upright in growth, with very dense, heavy foliage. Does not need trimming like other varieties.

15 to 18 in. Plants : 10 for \$2.10

HEDGES *Protect and Beautify* PRIVET

Amur River. Very hardy, will withstand severe cold weather. Formal upright in growth; dense.
15 to 18 in. . 25 plants for \$1.75
18 to 24 in. . 25 plants for \$2.00

California. Foliage of dark glossy green, of rapid growth. Very dense when trimmed.

15 to 18 in. . 25 plants for \$1.00
18 to 24 in. . 25 plants for \$1.50

BARBERRY

Thunbergi. Bright green leaves, turning to dazzling scarlet and crimson in Fall, with red berries.

15 to 18 in. . . . 10 plants for \$1.75
18 to 24 in. . . . 10 plants for \$2.00



Barberry Thunbergi

DAPHNE

(Garland Flower)

A dwarf shrub of spreading habit, not over 12 inches tall. Plant completely covered with highly scented, pink flowers in early Spring and Summer.

89c. Each

EUONYMUS VEGETUS

(Evergreen Bittersweet)

Low, spreading evergreen shrub. Excellent for foundation, rock garden or low hedge. Dark green leaves and orange berries in Fall and Winter.

89c. Each

MAHONIA

(Oregon Holly)

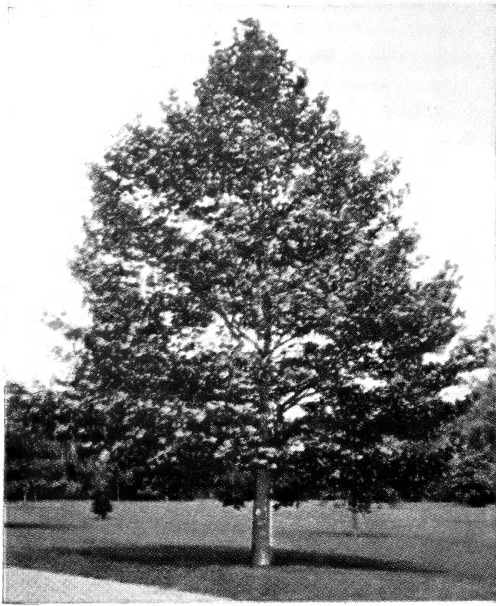
Foliage resembles Christmas Holly. Clusters of bright yellow flowers, followed by blue berries. Red foliage in Fall.

\$1.19 Each



Daphne Cneorum

ORNAMENTAL TREES



Chinese Elm

CHINESE ELM

A quick growing Elm of pleasing form. Disease free. **6 to 8 feet**

98c. Each : 2 for \$1.85

AMERICAN ELM

Stately growing tree. One of the best for shade. **6 to 8 feet**

89c. Each : 2 for \$1.59

BECHTEL'S FLOWERING CRAB

95c. Each
\$1.75 Pair

Large double pink, rose-like flowers. Beautiful and fragrant. Can be grown in any location. **3 feet**

PIN OAK

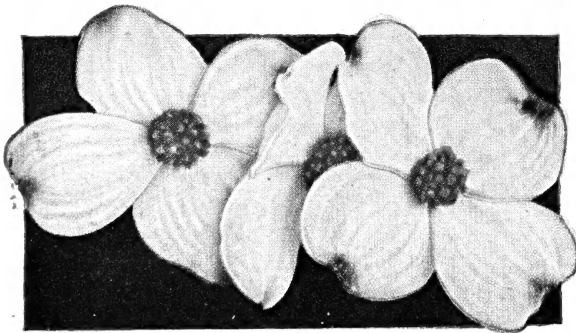
Pyramidal in growth, with dark, lustrous leaves. Very sturdy and long lived. **6 to 8 feet**
\$2.25 Each

POPLAR

A stately tree of rapid growth. Excellent for windbreaks or along driveways. **6 to 8 feet**
65c. ea. : 2 for \$1.10

SILVER MAPLE

The most popular tree for shade. Fast growing and very ornamental. **6 to 8 feet**



White Flowering Dogwood

CATALPA

Dwarf, umbrella shaped tree, usually planted in pairs, as specimens. **5 feet**
90c. each : \$1.65 pair

ASH

A beautiful shaped tree of fast growth, making excellent shade. **6 to 8 feet**
\$1.29 ea. : 2 for \$2.35

RED FLOWERING DOGWOOD

A slow growing tree of unusual beauty with large, single red flowers in early Spring.

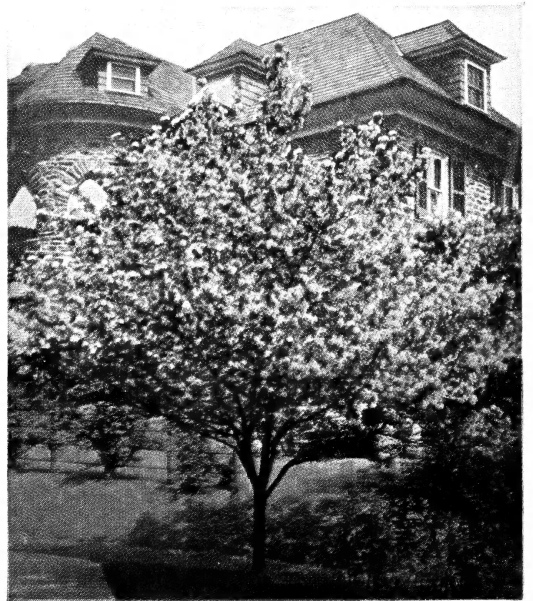
2 to 3 feet

\$2.49 Each

WHITE FLOWERING DOGWOOD

A delightful, low growing tree with white flowers in early Spring. Will grow well in either shade or sun. **2 to 3 feet**

\$1.35 Each : \$2.50 Pair



Bechtel's Crab

98c. Each : 2 for \$1.85

SYCAMORE

Erect growing, wide spreading tree. Bright green, large sized leaves. Good for shade. **6 to 8 feet**

\$1.65 Each : 2 for \$2.95

MOUNTAIN-ASH

Ornamental tree with beautiful foliage. Large, showy clusters of orange-red berries in Fall. **6 to 8 feet**

\$1.75 Each : 2 for \$3.00

EVERGREENS

Different Types —
for All Plantings

for
Year-'round
Beauty



Pyramidal Arborvitae

AMERICAN ARBORVITAE

Upright, rapid growing trees with soft green foliage, turning to dark green in Autumn. **18 to 24 inches**

\$1.10 each :: 2 for \$1.95

PYRAMIDAL ARBORVITAE

Most compact and erect type, foliage of deep green, retaining its color the year round. Naturally pyramidal. **2 to 3 feet**

\$1.95 each :: 2 for \$3.75

ORIENTAL ARBORVITAE

A neat growing variety, with short, attractive, intensely green foliage, pyramidal in shape. **18 to 24 inches**

\$1.25 each :: 2 for \$2.25

GLOBE ARBORVITAE

Compact, globe shaped, dark green foliage. The ideal type for planting around foundation or around taller growing trees. **12 to 15 inches**

\$1.00 ea. :: 2 for \$1.85

MUGHO PINE

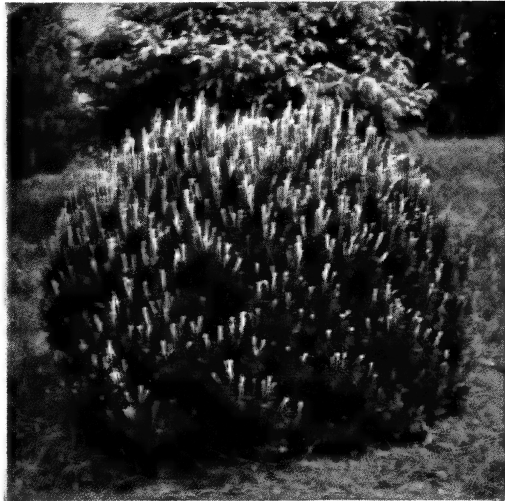
Dwarf, low growing type of Pine. Foliage dark green, short and stiff. Popular in foundation plantings. **15 inches**

\$1.65 ea. :: 2 for \$2.95

TAXUS (YEW)

Foliage of waxy, black-green needles that cover entire branch. The most highly recommended evergreen grown. Upright in form and does well in shade or sun. **15 to 18 inch trees**

\$2.00 ea. :: 2 for \$3.75



Mugho Pine

IRISH JUNIPER

Erect, slender and formal in habit of growth. Foliage of light blue-green.

**1½ to 2 feet
\$1.65 each
2 for \$2.95**

PFITZER JUNIPER

Low growing, spreading type, for foundation planting or in front of taller varieties. Dark green foliage. Blue berries in Fall.

**15 to 18 inches
\$1.95 each
2 for \$3.75**

FIR CONCOLOR

A very showy tree, with glaucous blue needles. Distinctive conical form of real beauty.

FRAZIER

A form of Balsam Fir. Foliage dark green; fragrant.

**Both above:
1½ to 2 feet
\$1.50 each
2 for \$2.75**

COLORADO BLUE SPRUCE

Beautiful, blue foliage, unsurpassed for color. Slow growing tree of upright form.

**Specimen trees—2 feet
\$2.50 each :: 2 for \$4.50**

HEMLOCK

One of the finest Evergreens adapted to shady spots. Lace-like foliage of dark, lustrous green. **2 feet**

**\$2.50 each
2 for \$4.50**

BIOTA AUREA NANA (Dwarf Golden)

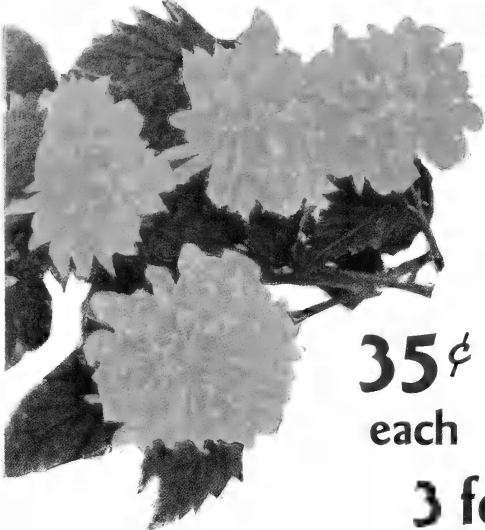
Pyramid in form, brilliant golden foliage. Will not grow over 3 feet. **1 to 1½ feet trees**

**\$1.35 each
2 for \$2.45**



Pfitzer Juniper

5 NEW SPECIALS for Your Garden -



Kerria Japonica

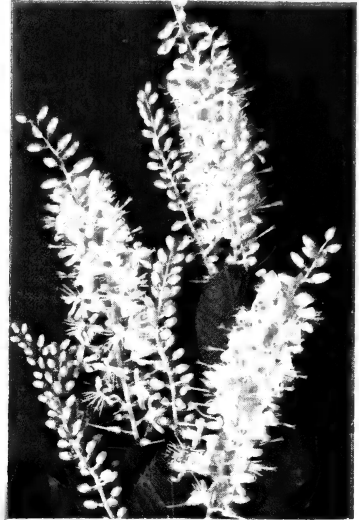
"MAY DAY" TREE

For sheer beauty and loveliness, plant one or more of these trees. It is the first flowering tree in the Spring. A beautiful sight when in full bloom. Long clusters of white flowers are fragrant and suitable for cutting.

35¢
each

12 inch size at

3 for \$1.00



May Day Tree

KERRIA japonica

A very attractive shrub with showy, yellow flowers and slender, green branches. Blooms throughout the Summer.

18 inch plants

55c. each
2 for \$1.00



Oak-leaf Hydrangea

Oak-Leaf Hydrangea

Large, handsome Oak-shaped leaves, dark green in Summer and gorgeous red in Fall. Large, white flowers turn purple during Summer. This is a new and rare plant. 18 to 24 inch

65c. each : 2 for \$1.15



CRATAEGUS - Hawthorn

Branches in early Spring are heavily laden with double, rose-red blooms and scarlet-red fruits. Tree form 3 to 4 feet.

\$1.49 each : \$2.79 a pair



Berries of Crataegus

COTONEASTER DIVARICATA

A beautiful, evergreen shrub, with small, glossy, deep green leaves, pink flowers and bright red berries. Excellent for foundation or border planting.

18 to 24 inch plants.

\$1.29 each

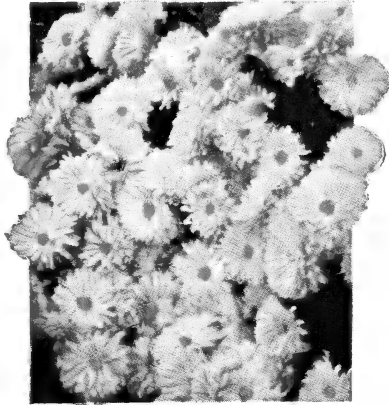
HARDY PERENNIALS

PEONIES

RED :: PINK :: WHITE

TRITOMA. Rich orange-red spikes on stems 3 to 4 ft. high. Long grassy leaves. Excellent for cutting.

SIBERIAN IRIS. Medium sized blooms, borne on short stems about 10 in. long. Blue color, good for cutting.



Mum, Pink Cushion

3 for 69¢

5

for

\$1.00



Red Peony

DWARF IRIS PUMILA. Very dwarf, excellent for rock garden. Deep purple; Clumps.



Siberian Iris

ORIENTAL POPPY. Large cup-shaped blooms of mixed, brilliant colors.

YUCCA. Tall, white flowers, with sword-like foliage. Excellent for border.

CHRYSANTHEMUMS

30c. each, 4 for \$1.00, \$2.50 per doz.

- Algonquin** (Azaleamum)..... Yellow
- Caliph**..... Maroon
- Rose Glow**..... Old rose
- King Cushion**..... Copper-bronze
- Mars** (Korean)..... Red, yellow center

PINK CUSHION MUM

Flowers of deep rose pink, tinged with ivory and gold. Hardy, covered with blooms throughout the Summer, till heavy frost.

LILY BULBS

Regal. Giant flaring trumpets with golden throat, crimson stripes.

Elegans. Large cup-shaped flowers dark crimson, black spots.

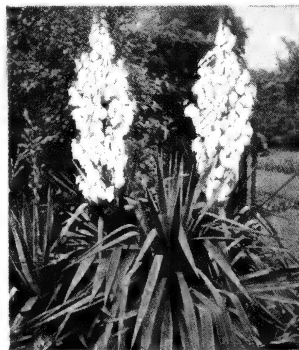
Madonna. Disease-free bulbs. Will bear an abundance of white, thick-petaled flowers.

HARDY PHLOX

- Daily Sketch.** Salmon pink, crimson.
- Ethel Pritchard**..... Mauve
- Africa**..... Carmine-red
- Innocence**..... White
- Rosenburg**..... Purple
- Thor**..... Salmon
- Von Hochberg**..... Red



Hardy Chrysanthemums



Yucca



Oriental Poppy



Concord

GRAPES

AGAWAM

Large red, spicy flavor, midseason. Hardy.

3 for45c.
10 for . . . \$1.00

NIAGARA

Best white Grape. Large, compact bunches.

3 for35c.
10 for90c.

CONCORD

Most popular blue Grape. Best for juice.

3 for25c.
10 for65c.

RHUBARB

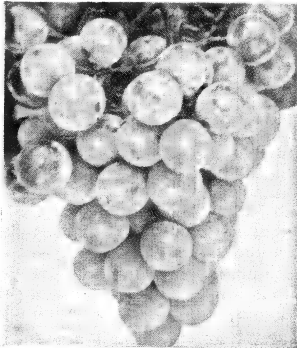
Medium size stalk, bright red, tender. Best for pies.

12c. each 10 for \$1.00

ASPARAGUS

Early producing, fine flavor. The first vegetable in the Spring.

12 for 50c. 25 for 75c.



Niagara

STRAWBERRIES

PREMIER. One of the best and most popular.

WM. BELT. Large fruit, good flavor. Prolific.

GLEN MARY. Late, large. Very sweet.

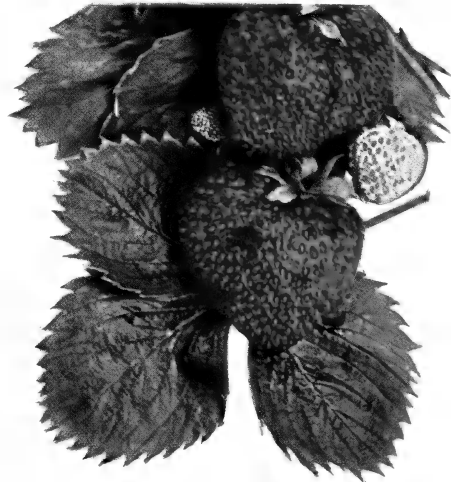
PRICE

25 for 35c., 50 for 65c., 100 for \$1.00, 500 for \$4.50, 1000 for \$8.00

GEM

EVERBEARING

25 for45c.
100 for \$1.60
1000 for . . . \$12.00



RASPBERRIES

CUMBERLAND. Black.10 for 50c.

SODUS. Purple.10 for 55c.

LATHAM. Red.10 for 65c.

NEWEST VARIETIES

BRISTOL. Black.10 for 65c.

TAYLOR. Red.10 for 75c.

INDIAN SUMMER (EVERBEARING) RED.10 for 75c.

CURRENTS

Wilder **Perfection**
25c. ea., 3 for 60c., 10 for \$1.50

GOOSEBERRIES

30c. ea., 3 for 75c., 10 for \$2.25

BOYSENBERRY

3 for35c.

BLACKBERRIES

10 for50c.



Latham Raspberry

CALL'S

Northern-Grown

APPLES

BALDWIN
Large, red. Winter.

CORTLAND
Deep red. Winter.

RED DELICIOUS
Finest red. Winter.

GRIME'S GOLDEN
Good quality yellow.
Winter.

JONATHAN
Popular bright red.
Winter.

McINTOSH
Large red. Winter.

MELBA
Similar to McIntosh.
Fall.

NORTHERN SPY
Striped red. Winter.

RED ASTRACHAN
Crimson, rich flavor.
Summer.

R. I. GREENING
Large green. Juicy.
Winter.

WINESAP
Old favorite, dark red.
Winter.

WEALTHY
Large, red striped.
Fall.

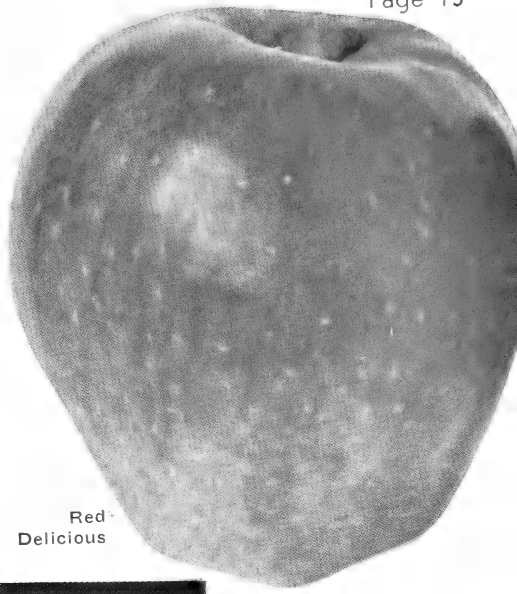
YELLOW DELICIOUS
Large, yellow, juicy.
Winter.

YELLOW TRANSPARENT
An Apple that comes
into bearing very
young. Summer.

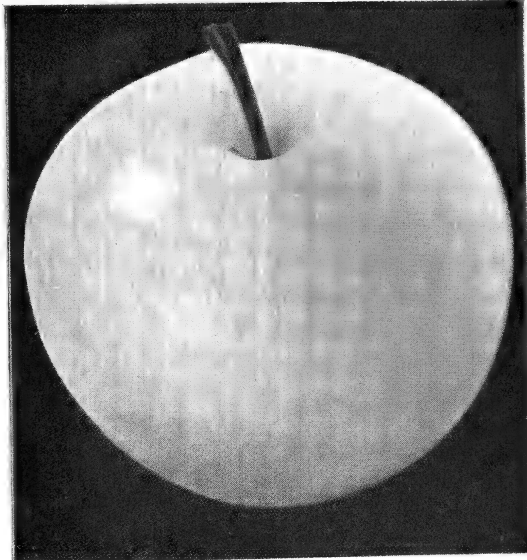
2-yr.-old — 3 to 5 feet

45¢ Each

3 for \$1.25, 10 for \$3.98



Red-
Delicious

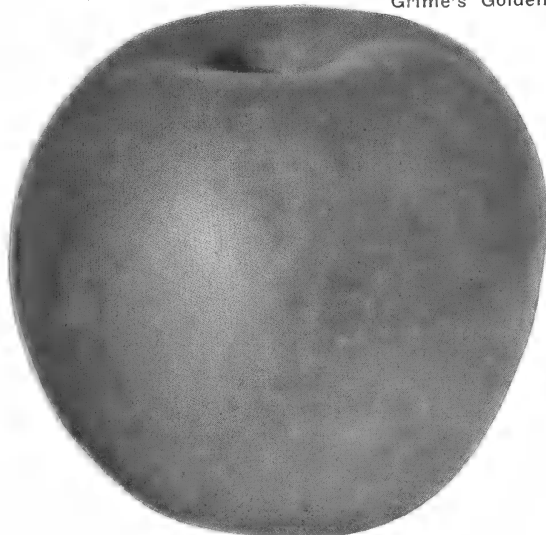


Grime's Golden

NEW BEACON APPLE

This NEW variety is a Fall Apple, ripening with or a few days later than **Duchess**. Has excellent storage qualities. It is highly colored, all red, better eating than **Duchess** and is an excellent cooking Apple. Vigorous, productive and very hardy. The above qualities make the **Beacon** an outstanding variety, and it is priced the same as other varieties.

See Picture on
Back Cover



Cortland

BEARING-AGE TREES

The best strains for Orchard and Home Planting

**BALDWIN
GOLDEN
DELICIOUS
ROME
BEAUTY**

\$1.50 Each

**JONATHAN
RED
DELICIOUS
WEALTHY
STAYMAN
WINESAP**

3 for \$3.75

**R. I.
GREENING**

10 for \$10.00

5-year-old, 1 1/4-in. caliper, 7 to 8 feet

CHERRIES

BRASSINGTON

See back cover for description and price



Montmorency

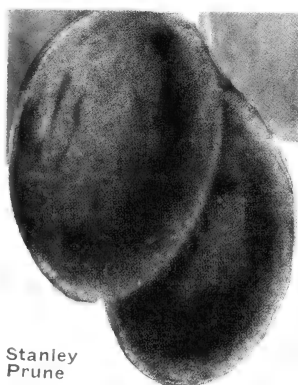
SOUR

EARLY RICHMOND

Medium size. Dark red. June.

LARGE MONTMORENCY

Bright red. Good for canning. Late June.



Stanley Prune

A Russian Mulberry planted among your cherry trees attracts birds. They will eat the Mulberries and not bother the cherries. 3 to 4 ft. trees, 60c. ea. One is all you need.

59¢ ea.
3 for \$1⁶⁹
10 for \$4⁹⁵

SWEET

BLACK TARTARIAN. Black, firm.

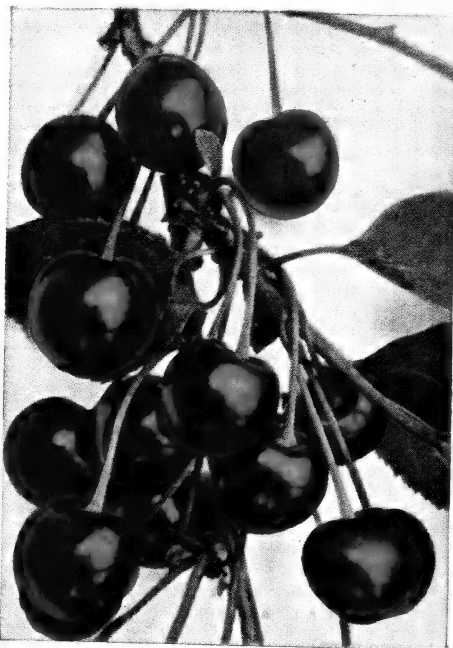
GOVERNOR WOOD. Large deep yellow, shaded red.

NAPOLEON. Pale yellow and red. Large.

SCHMIDT'S. Deep black, juicy.

WINDSOR. Liver colored. Juicy.

YELLOW SPANISH. Best yellow and red.



Black Tartarian

ALL FRUIT TREES—2-Year, 3-5 Feet

PLUMS *Succeed Everywhere*

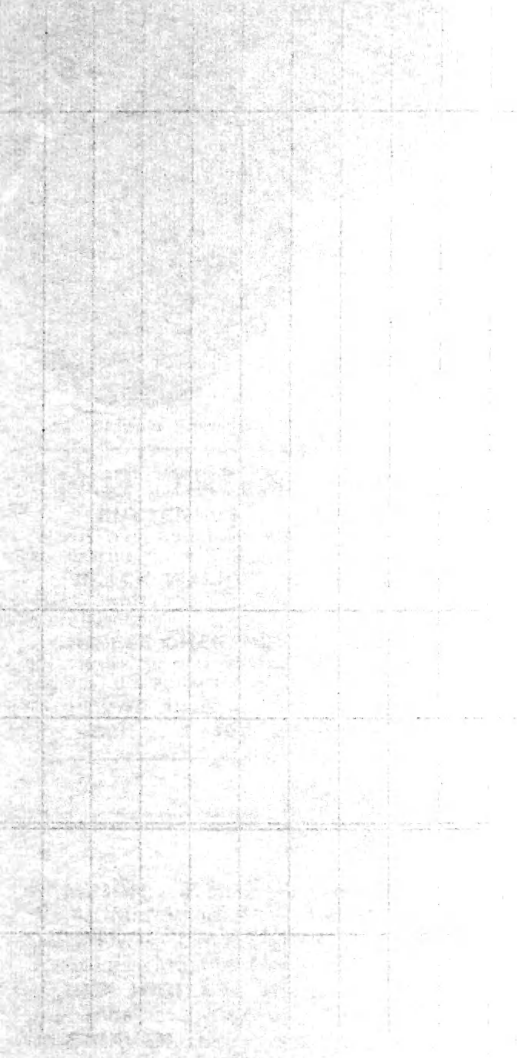
ABUNDANCE. Large, yellow, sweet.

LOMBARD. Purple-red, tart.

GERMAN PRUNE. Deep purple. Freestone.

New
STANLEY PRUNE
 A new introduction, very hardy. Similar to German Prune but bears earlier. Best quality.

45¢ ea.
3 for \$1²⁵
10 for \$3⁹⁸



WORKSHEET

NAME: _____ DATE: _____

1. Write the number of the following numbers in words.

2. Write the number of the following numbers in figures.



Clapp's Favorite

PEARS 2-year 3 to 5 ft.

- ANJOU.** Fruit large, greenish yellow; sweet, juicy.
- BARTLETT.** Large, yellow, juicy, best quality. Similar to Bartlett, ripens 10 days earlier.
- CLAPP'S FAVORITE.** Similar to Bartlett, ripens 10 days earlier.
- DUCHESS.** Very large fruit, coarse flesh.
- KIEFFER.** Productive, good canning Pear. Ripens late in Fall and good keeper.
- SECKEL.** Fruit small, reddish brown. Fine for pickling.

45¢ ea.
3 for \$1.25
10 for \$3.98

APRICOT

- HUNGARIA**
- MOORPARK**
- Both**
- 50c. each 3 for \$1.39

Special

- DWARF PEAR**
- BARTLETT**
- DUCHESS**
- SECKEL**

59¢ 3 for \$1.69 each

QUINCE

- CHAMPION**
- O R A N G E**
- Both**
- 50c. each 3 for \$1.39

NUT TREES

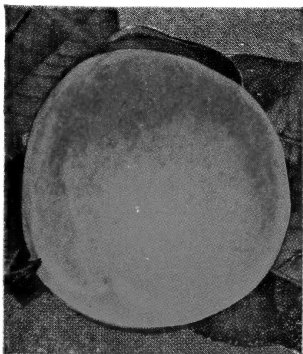
- BUTTERNUT**
Native tree, rapid in growth. Quick bearing.
- BLACK WALNUT**
Very hardy, prolific bearer. Beautiful shape.
- CHINESE CHESTNUT**
Practically the only blight-proof Chestnut. Large, sweet.
- All Above**
75c. each 3 for \$1.98

PEACHES

- CHAMPION.** White, red cheek, juicy. Mid-August.
- ELBERTA.** Large, yellow-red, freestone. Mid-September.
- GOLDEN JUBILEE.** Early, yellow, freestone. August.
- HALE-HAVEN.** Highly colored yellow, freestone. Early September.

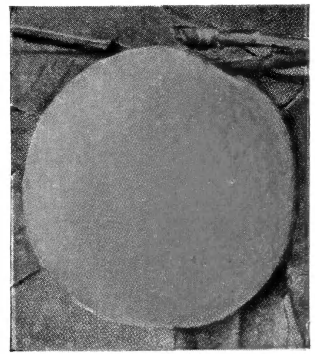
35¢ ea.
3 for \$1.00
10 for \$2.98

- JUNE ELBERTA.** Similar to Elberta, but ripens earlier.
- J. H. HALE.** Extra large fruit. Golden yellow, red. September.
- LEMON FREE.** Best yellow canning Peach. Late September.
- ORIOLE.** Medium size, good quality, yellow. August.



Rochester

- ROCHESTER**
Early yellow, highly flavored. August.
- SALBERTA**
Yellow, red cheek, freestone. September.
- SOUTH HAVEN**
Large, early, yellow. August.
- SHIPPER'S LATE RED**
Bright red, yellow flesh. September.



J. H. Hale

Call's

3 NEW FRUITS

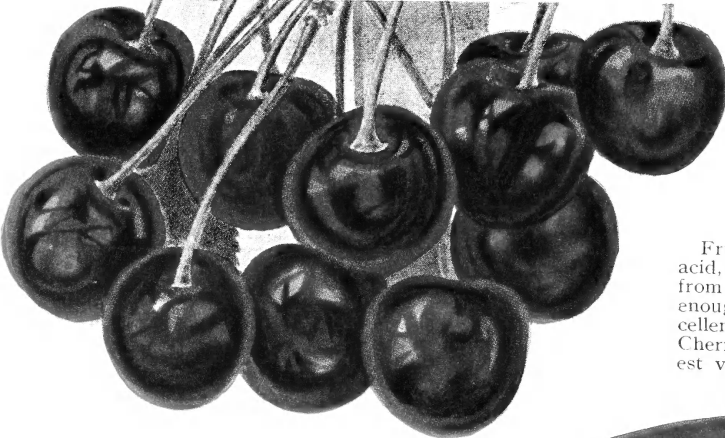
HARDEE

(U. S. Plant Patent No. 120)

The NEW hardy Peach that will withstand sub-zero weather. Fruit large, yellow. Freestone. Excellent flavor, good shipping.

7/16 inch caliper, 3 to 4 feet, priced at

69¢ ea. : 3 for \$1.95 : 10 for \$5.50



Brassington CHERRY

Fruit dark red, sub-acid, sweet enough to eat from the tree, yet sour enough to make an excellent pie and canning Cherry. One of the finest varieties.

69¢ ea.

3 for \$1.95

BEACON

See page 13 for description

45¢ EACH

3 FOR \$1.25

10 FOR \$3.98

